

Festivus for the Rest of Us

Full-stack campus budget submission solutions for all



Stephen Cembrinski, Budget Director

SUNY Delhi[®]

Pressure and Time

Before COVID-19

- Could not find time to tackle new projects or ideas – tied up in endless to-do lists



During COVID-19

- Still short on time, but more on my to-do lists
- Also:
 - Tighter budgets
 - IT team stretched to limits
 - Limited campus bandwidth for new solutions

“Invention, it must be humbly admitted, does not consist in creating out of void but out of chaos.”

-Mary Shelley, Author of Frankenstein

Key Takeaway from SAIL CBO

- Strengths Finder results – Learner, Ideation, Achiever, Intellection, Restorative
- I felt empowered to take a risk and do something I have never done, and I was given the time to try it

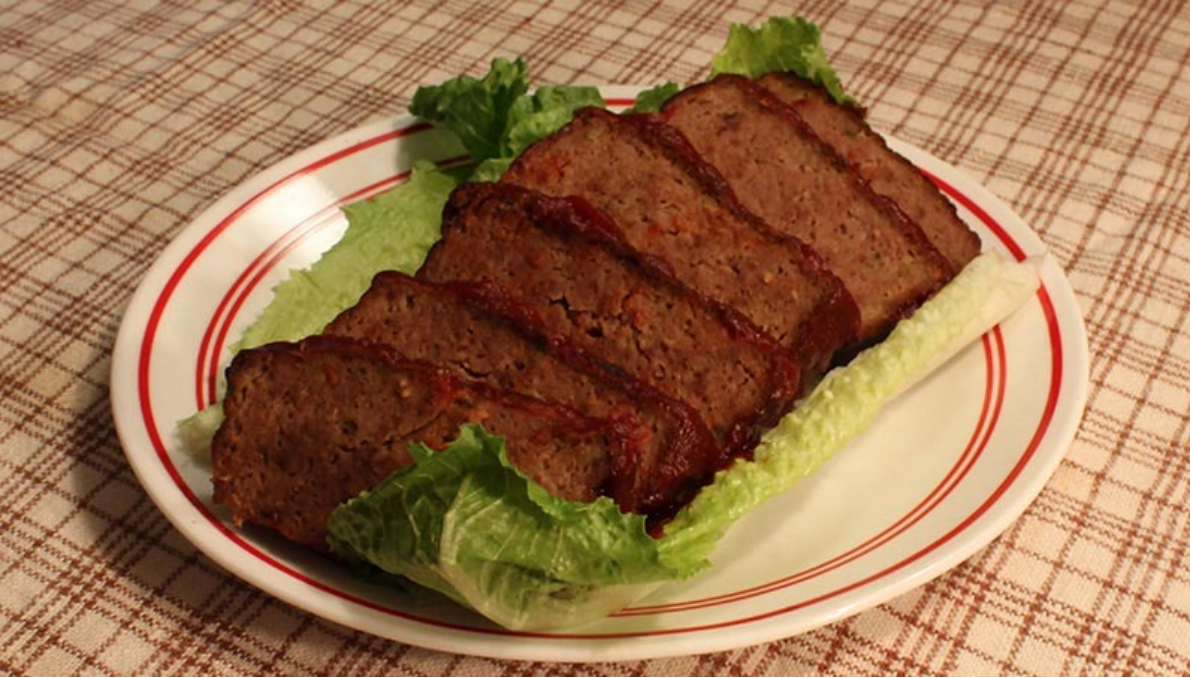


What problem am I trying to solve?

Item #	Account	Budget Item Description	Spending Category	Type of Expenditure	Recurring	One-time	Total	Justification
1	86060100	Administration	4 - Managerial / Operational	Supplies	\$ 1,200.00		\$ 1,200.00	Used for supplies for Facilities operations
2		Code Training	1 - Health and Safety	Membership	\$ 225.00		\$ 225.00	Code Training to keep certification for two
3	87090100	Administration	4 - Managerial / Operational		\$ 2,000.00		\$ 2,000.00	Used for supplies for Facilities operations
4							\$ -	
5	86061500	Building Maintenance	1 - Health and Safety	Supplies	\$ 6,000.00		\$ 6,000.00	These accounts pay for Campus Pest Control
6								
7	87091500	Building Maintenance	1 - Health and Safety	Supplies	\$ 4,000.00		\$ 4,000.00	These accounts pay for Campus Pest Control
8							\$ -	
9	86062001		1 - Health and Safety	Maintenance	\$ 7,000.00		\$ 7,000.00	Elevator contract
10	86062002	HVAC/Electrical Plum	1 - Health and Safety	Supplies	\$ 8,000.00		\$ 8,000.00	These accounts includes monthly water treat

Item #	Account	Budget Item Description	Spending Category	Type of Expenditure	Recurring	One-time	Total	
1	86040500	Student Assistants	4 - Managerial / Operational	Part-time Payroll - Student	yes		\$ 6,939.00	Student Assist
2	86040500	Night Supervisor - TS	4 - Managerial / Operational	Part-time Payroll - Non-Inst	Yes		\$ 8,951.00	Evening mana
3	91044901	Library fees & fines	5 - Revenue Generating	Maintenance	Yes		\$ 500.00	Replacement c
4	86040500	PPE - face shields	1 - Health and Safety	Supplies	No		\$ 60.00	Purchased thro
5	86040500	PPE - non-latex gloves	1 - Health and Safety	Supplies	No		\$ 60.00	estimate for 3
6	86040500	Springshare/LibGuide E-Reserves	2 - Instruction	Software	Yes		\$ 1,999.00	This software
7	86040500	Compendium Library Services (Desk Trac	4 - Managerial / Operational	Software	Yes		\$ 795.00	This software
8	86040500	De Lage Landen Public Finance Book Scal	3 - Student Facing Expe	Equipment	Yes		\$ 732.00	6 months of sc
9	86040500	CCP Solutions, LLC (Scanner service agre	4 - Managerial / Operational	Maintenance	Yes		\$ 670.00	Yearly service

I need a simple, accurate way to compile budget submissions during the year.



The Meat Course: Exploring solutions

- Met with our Director of Instructional Design and Online Learning and members of our IT staff (including CIO) to explore possible tools
- Asked questions of the SUNY Budget Office and Form 1 compilation
- Toured budget software utilized at SUNY Plattsburgh
- Researched web solutions



SOLUTION #1 –
CRUD

Web CRUD using PHP and MySQL

Create New Budget Item

Please fill this form and submit to add budget item to the database.

Department

Please select Unit

Account Number

Please choose Unit above

Item Description

Spending Category

Please select spending category

Expenditure Type

Please select expenditure type




Timing:

One-Time

Recurring

Spring 2021 Budget Details

Add New Budget Item

#	Account	Item Description	Spending Category	Expenditure Type	Timing	Amount	Justification	Area(s) to Notify	
26	90084002	Student employees	Student Facing Experience	Part-time Payroll - Students	Recurring	30000	Need them!!!!	N/A	  




✓ Showing rows 0 - 0 (1 total, Query took 0.0200 seconds.)


```
SELECT * FROM `budget2`
```

Profiling [Edit inline] [Edit] [Explain SQL] [Create Ph

Show all | Number of rows: 25 | Filter rows: Search this table

+ Options

	id	account	budget_item	spending_category	exp_type	timing	amount	justification	area_notify	unit
<input type="checkbox"/>  Edit  Copy  Delete	26	90084002	Student employees	Student Facing Experience	Part-time Payroll - Students	Recurring	30000	Need them!!!!	N/A	comput

Check all | With selected:  Edit  Copy  Delete  Export



SOLUTION #2 –
EXCEL AND ACCESS

Amazing side-effects

- I can now use the same Excel to Access functionality to:
 - Import PSR by line reports from BI
 - Compile Excel reports from Interview Exchange
 - Continue to use this process for larger units who don't want the CRUD functionality
 - Merge selected Assessment and Budget data into one collection system

- And that's not all...

Would you believe this is Excel?

UserForm1 ×

Please login to submit your budget requests.

Username:

Password:

Click if you're AWESOME!

SUNNY Delhi[®]